

**Ara
Ake**

Future
Energy
Development



WISE
Charitable Trust

community
ENERGY
network

People powered wellbeing, together

NZ CHAMBERS OF COMMERCE

T A R A N A K I

Business Vitality

Reducing Energy Hardship Conference

24 & 25 May 2023 | Devon Hotel, New Plymouth



MINISTRY OF BUSINESS,
INNOVATION & EMPLOYMENT
HĪKINA WHAKATUTUKI



MINISTRY OF SOCIAL
DEVELOPMENT
TE MANATŪ WHAKAHIATO ORA



Keri Brown

Chair, Energy Hardship Expert Panel

Keri Brown

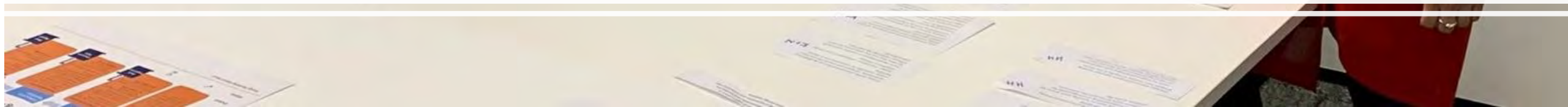
Chair, Energy Hardship Expert Panel

Reducing Energy Hardship Conference
New Plymouth, Aotearoa NZ | May 24 & 25 2023





Who are we?





Housing type and quality

What type and quality of home is it?



Household needs

What energy do the people in the home need?



Appliance efficiency

How efficient are the household's appliances?



Energy sources

What supplies energy to the home?



Household income

What is the household income?



Energy costs

How much is the household paying for energy?



Location

Where in New Zealand is the home?



Knowledge

How much do people in the home know about energy?

Energy Hardship in Aotearoa New Zealand



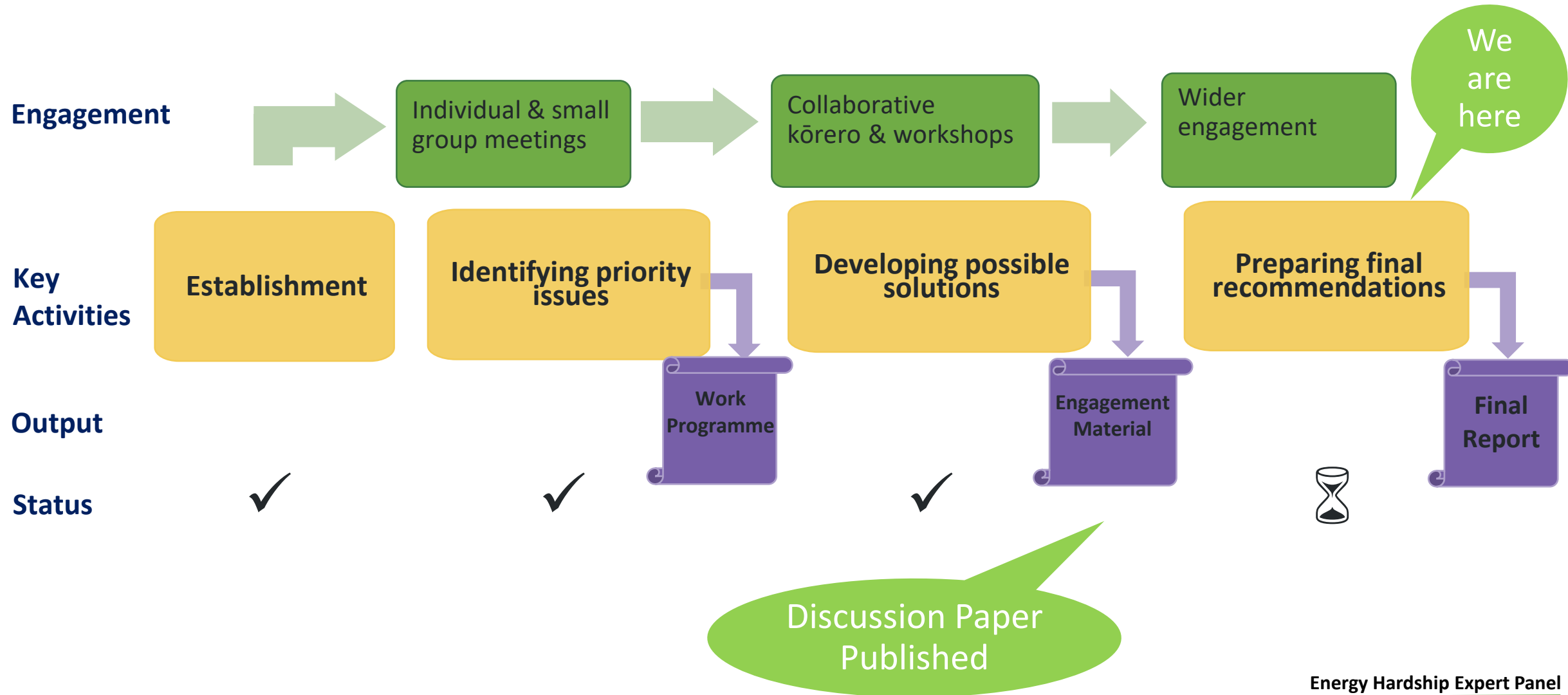
Energy Hardship Expert Panel Outcomes

Panel's Outcomes Framework

We believe all children and whānau should be able to access and afford the energy they need to live in a safe and healthy home

- access energy regardless of **income or location**
- **access and afford** appropriate levels of home energy within their home
- **receive the support** they require
- People **easily understand** and are supported to make the best decisions about their energy
- People are **confident to articulate their needs** to energy companies and **easily compare plans** and make choices
- **Energy protections, with clear compliance standards**

Our approach – where are we now?





Health of the Home

*Improving energy well-being
through healthier homes*



Energy Accessibility & Choice

*Accessing energy regardless
of income or location*



Consumer Protection

*Protecting energy consumers in
their relationships with providers*



Knowledge & Navigation

*Supporting and empowering whānau
in their energy decisions*



Energy Affordability

*Affording the energy whānau
need for their well-being*





Panel session: Energy Hardship

- **Bronwyn Petrie - Manager, Healthy Home Initiatives, Te Whatu Ora**
- **Dr Kimberley O'Sullivan - Senior Research Fellow, Otago University**
- **Keri Brown - Chair, Energy Hardship Expert Panel**
- **Hinerangi Pere - Energy Navigator, Tainui**
- **Christina Scott - Director, Taranaki Public Service Leaders Forum, Ministry of Social Development**



Community based responses to energy hardship

- Paul Scouller - General Manager, WISE Charitable Trust



WISE
Charitable Trust

Our Core Values ... CREATING SUSTAINABLE EMPLOYMENT AND PATHWAY TRAINING



(W.I.S.E.) Waitara Initiatives
Supporting Employment

Our Pathway Training is Supported
by:



Te Kaunihera-ā-Rohe o Ngāmotu
**New Plymouth
District Council**



Our Initiatives -Retro Fitting Of Home Insulation **20** years in the Warmer Kiwi Homes Program



WISE has been making homes healthy since 2002



20 Years of Insulating Homes around the Taranaki region....

- **18,000 Homes insulated.**

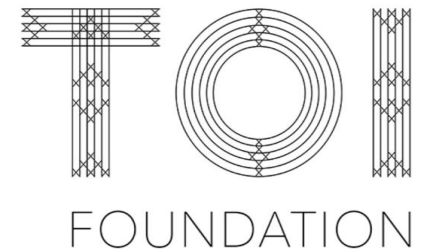
That's 18,000 Families/Whanau living in....

WARMER and more Energy Efficient HOMES in Taranaki.

Our WARMER KIWI HOMES Initiative:

Has been funded around 20 Years by these Funders of Home INSULATION Around Taranaki ,

THIS IS OVER 20 Years of key Partnerships and relationship building with LONG TERM FUNDERS.



HPA / WHIPIT INITIATIVE

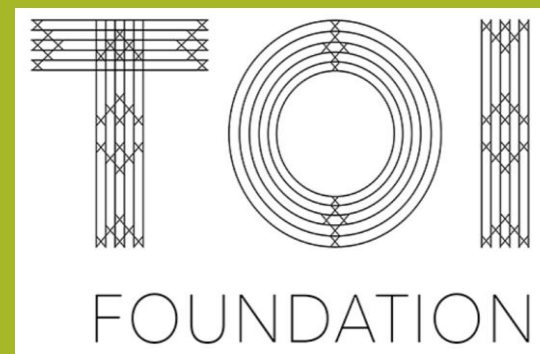
- PILOT PROGRAMME 2021 -

We assessed **12** Homes, with referrals of **Extremely Sick Tamariki and Pepi** from our local **Te Whatu Ora Paediatrics Team**.

We completed HPA (Home Performance Advising.) in-home assessments of the homes of these very sick Tamariki and Pepi.

Our WHIPIT Team – Remediated **10** Homes of these sick children,

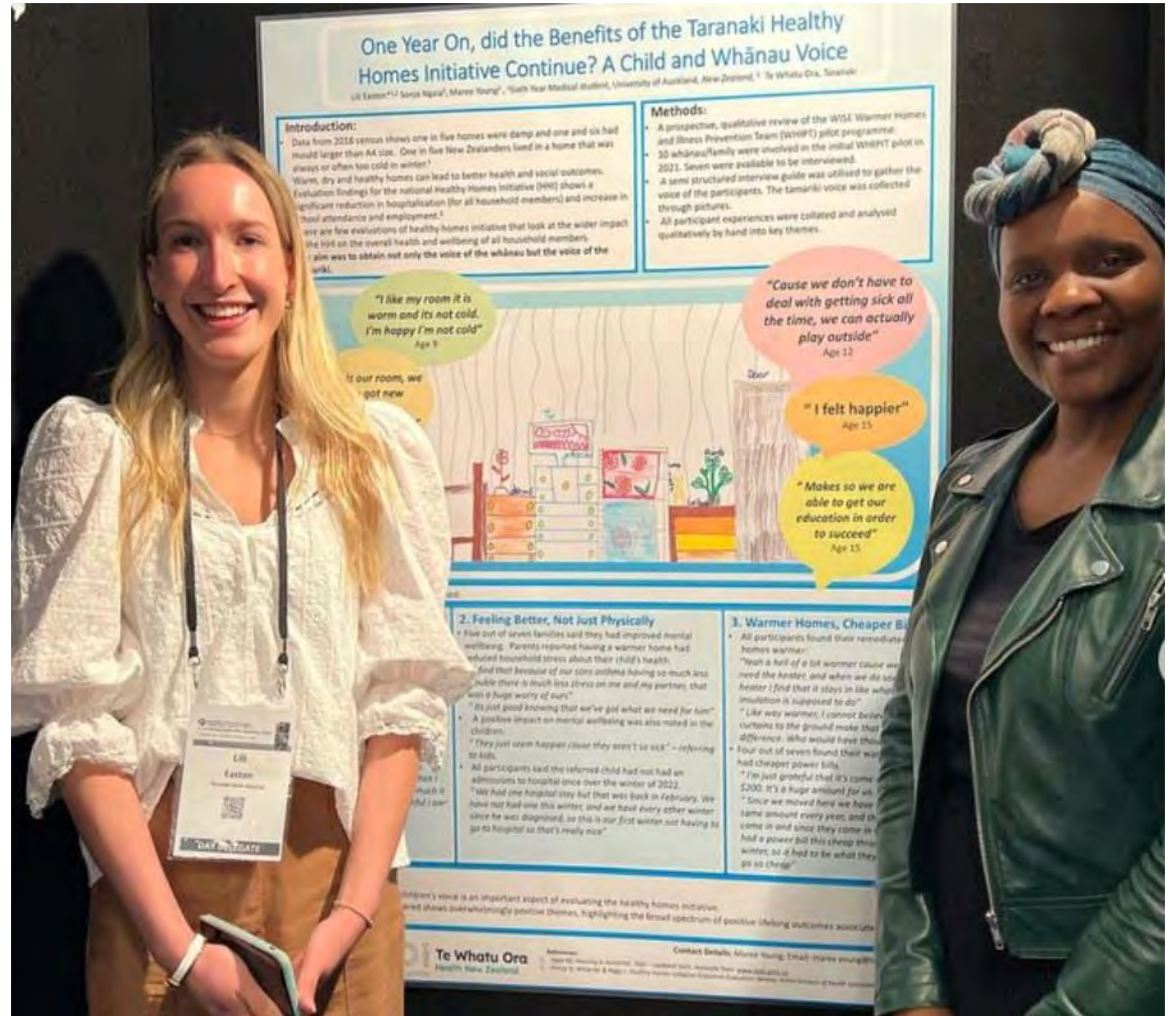
The Outcomes of this Pilot Programme were a massive success for WISE and Toi Foundation.



The Te Whatu Ora public health unit initiated an evaluation study of WISE & Toi's Pilot programme and the findings were...

Out of the 10 sickest Tamariki and Pepe's referred to WISE by the Paediatrics Team and of the 10 homes that were assessed and remediated....

None of the 10 children were admitted into ED or Hospital that next winter period.



When inspecting Whanau homes,
our key focus is on the sick Childs Bedroom & we focus on

- The Big 6 -

Reduce Heat Loss

Heating

MOULD Growth!
where/why



Energy Efficiency

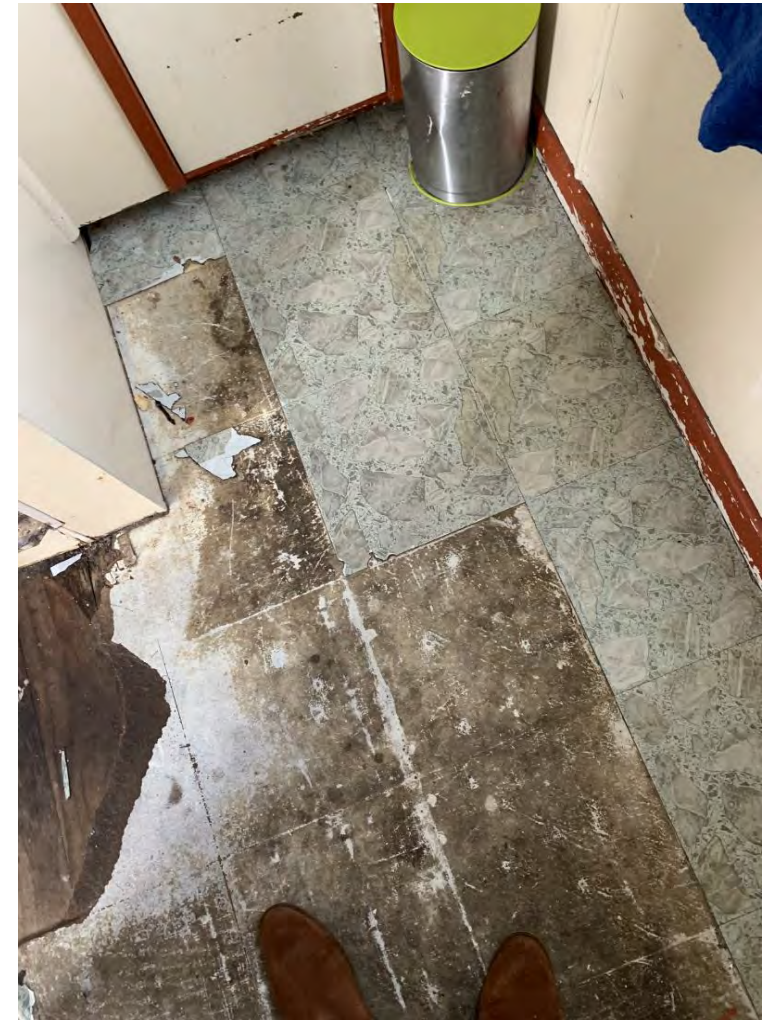
Ventilation

Moisture Control



HPA & WHIPIT Pilot Program

Before Pictures of homes assessed....



Our HPA assessment findings inspecting homes...



Our HPA assessment findings inspecting homes...



HPA Home assessment findings....

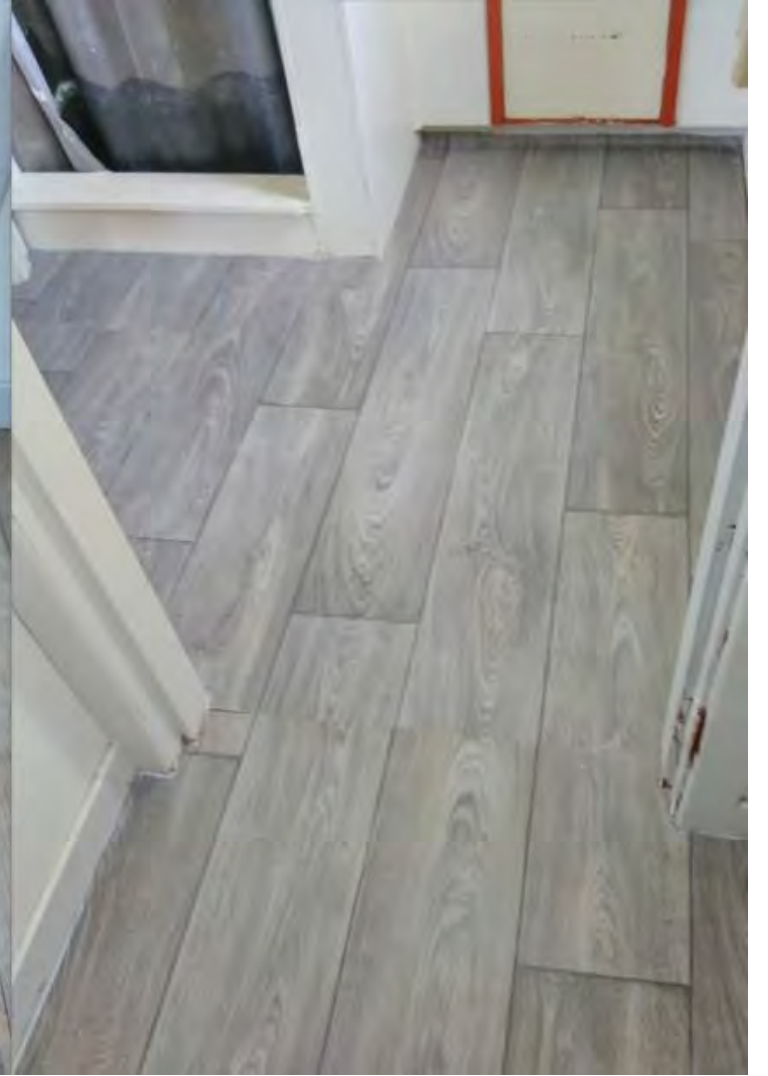


Pic Above: Temp shows 6.9 degrees



Pic Above: Shows a temp of 15.4 degrees – by repositioning bedding.

Our WHIPIT Team Remediated Homes....



More Remediations...of sick children's rooms

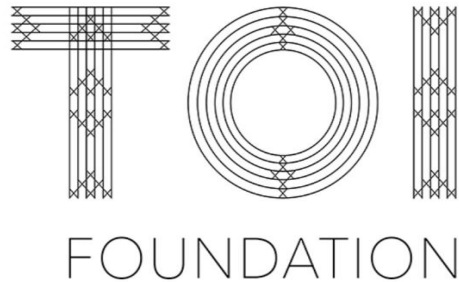


More remediations...of sick children's rooms.



WISE`s HPA & WHIPIT INITIATIVE

was able to become a regular initiative throughout Taranaki Thanks to.....



TOI, TODD ENERGY, POWER CO

&

MBIE`s S.E.E.C FUND

(SUPPORT FOR ENERGY EDUCATION IN COMMUNITIES.)

ALL SUPPORTED OUR INITIATIVE OF WHANAU IN ENERGY HARDSHIP

THIS PARTNERSHIP ALLOWED US TO ASSESS AND REMEDIATE A FURTHER **30** MORE HOMES AROUND TARANAKI LAST YEAR. WITH THIS YEARS FUNDING WE ARE ABLE COMPLETE 30 MORE HOMES.

COLLABORATION IS KEY TO QUALITY OUTCOMES FOR WHANAU LIVING IN ENERGY HARDSHIP AROUND OUR REGION.

THIS PARTNERSHIP NOT ONLY ASSISTED OUR ORGANISATION TO SUPPORT WHANAU LIVINING IN “ENERGY HARDSHIP” BUT ALSO ASSISTED WISE TO....

- Create more employment. Train more staff in pathway training to create sustainable employment for them into the future.
- Educate to wider community through our Healthy Homes Presentations.
(Eg: Roderique Hope Trust Ready – To – Rent programme, Hapu wananga Taranaki, Māori Women's Welfare League)
- We were able to assess and remediate more homes – but with more focus on Energy Education of Whanau within the home and education of Landlords on Healthy Homes Standards.
- Monitor the homes with Monkey Tronics devices – measuring Temperature & Humidity levels within the home, with these devices we could monitor daily the Temperature and Moisture issues within the home.
- We monitored their Energy Bill`s and our remediation work in the home allowed us to.....
reduce their Energy usage, in some instances up to \$200 to \$250 in “Energy Savings” per month.
- We assisted the whole Whanau with better health and well-being ! (Not just the sick child referred to us.)



NGĀTI MARU

A place we call home

WE LEARNT COLLABORATION WAS KEY.... SO WE TEAMED UP WITH
Ngāti Maru
TO ACHIEVE BETTER HEALTH OUTCOMES FOR WHANAU.
NGATI MARU PARTNERED WITH US TO COMPLETE DEEPER RETRO
FITTING OF HOMES FOR WHANAU.

Te Whatu Ora
Health New Zealand

HHI – HEALTHY HOMES INITIATIVES TARANAKI



The HHI Initiative is a success programme run by Te Whatu Ora NZ wide.

This HHI initiative is an example on how collaboration with Community Organisations and other Government agencies and external health providers achieving better health out comes for Whanau, especially that of Tamariki and Pepi with serious underlying health issues.

Many of the HHI Whanau Providers are here over these next 2 days I encourage you all to chat with them at any stage you may get over the next 2 days.





WISE
Charitable Trust





WE COULD NOT ACHIEVE ALL THIS WORK WE DO, IF IT WAS NOT FOR ALL OUR AMAZING STAFF AND THEIR DEDICATION AND ALL THE AMAZING VOLUNTEERS WHO SUPPORT OUR ORGANISATION WE THANK YOU!



From left:
 Patal Scouller General Manager,
 Carina Chaves, Steven Balogh,
 Douglas Hopkins The Junction Supervisor
 Hannah Waterman, Wayne Rees,
 Jane Buckley



OUR COMMUNITY INITIATIVE'S.....



Jammies in July

THE ANNUAL PYJAMA DRIVE IS BACK!
We are looking for donations of pyjamas to give to 100 children in need

FOR DONATIONS OR ENQUIRIES,
CONTACT WISE ON 0508 238 837
OR enquiries@wise.org.nz

WISE Charitable Trust



SPECIAL MENTION....

- Professor Philippa Howden-Chapman
QSO CNZM Sesquicentennial Distinguished Professor,
Otago University School of Medicine –
Philippa is a Patron of WISE Charitable Trust and completed many Studies on our Initiatives over the years. Philippa and her team won the Rutherford Medal Award 2021 for Impact of housing on health research.
- Te Whatu Ora Pediatrics Team & The Public Health Unit.
- The WISE Charitable Trust – Board of Trustees.
- Gareth Cartwright – Community Energy Network.





WISE
Charitable Trust

QUESTIONS



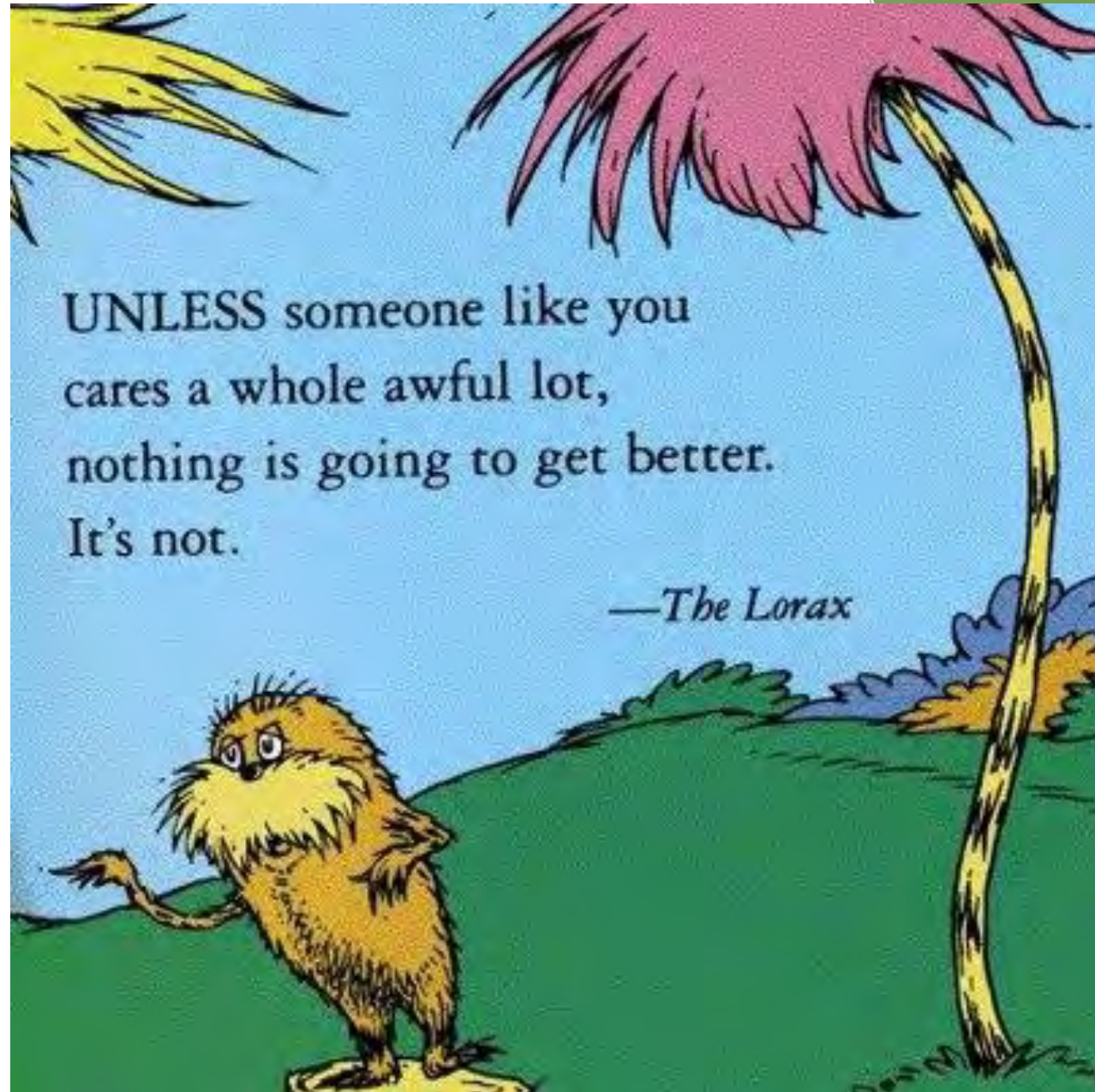
Community based responses to energy hardship

- **Cliff Colquhoun - Managing Director, Healthy Homes Tai Tokerau**

Healthy Homes Tai Tokerau

Community Business &
Environment Centre
(CBEC)

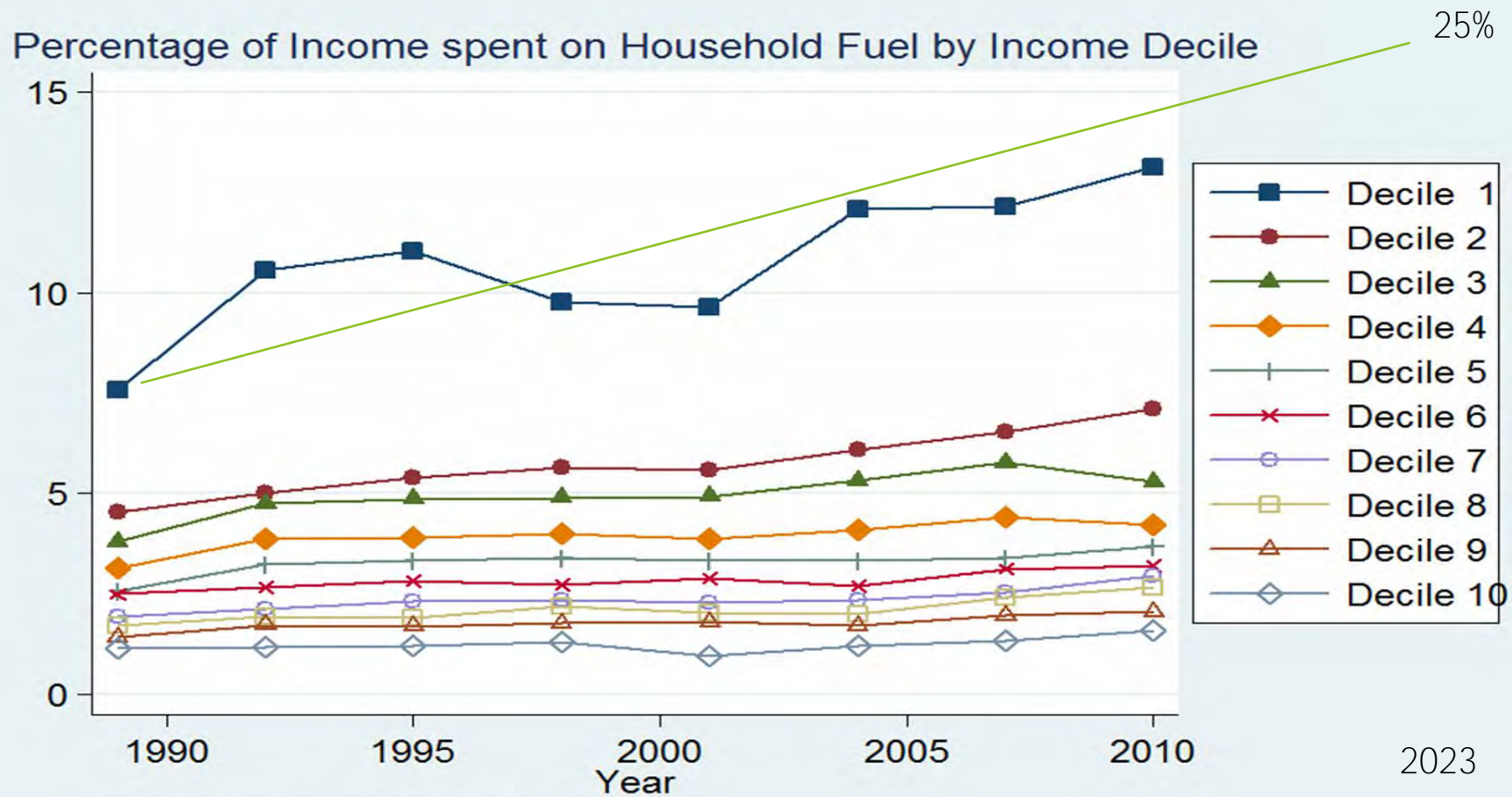
Hi Iwi Kotahi Tato Trust
(HIKTT)



Fuel Poverty

= Lowest incomes

= Highest price for power



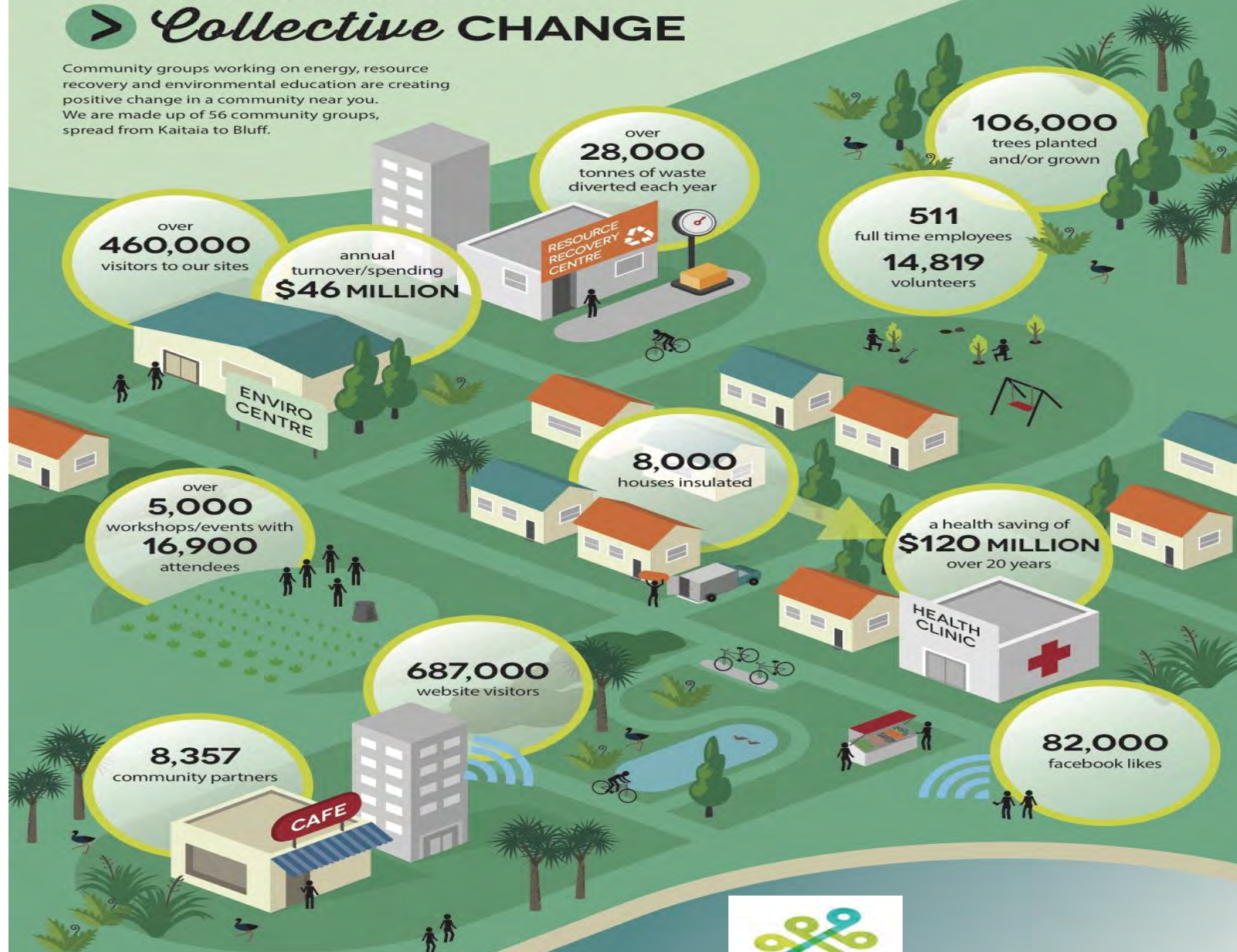
Source Data: Statistics New Zealand

After figure 34 'Market Design Review - Options Paper' Electricity Commission

Collective IMPACT

> Collective CHANGE

Community groups working on energy, resource recovery and environmental education are creating positive change in a community near you. We are made up of 56 community groups, spread from Kaitia to Bluff.



Data for this infographic comes from membership surveys, charities commission returns and impact measurement data from our members. It is based on 2015-2016 data.



ENVIRONMENT HUBS AOTEAROA
Collaboration for local solutions



community
ENERGY
network

**GOVERNMENT
WELLBEING PRIORITIES,
PROVIDED BY
COMMUNITY ENTERPRISE**

Te Tai Tokerau Model

Social Services

- Addressing Poverty ✓
- Energy Poverty ✓
- Home Improvements ✓
- Home insulation and address dampness ✓
- Home Heating ✓
- Employment Creation ✓
- Justice Reform ✓

Environment

- Environment Education ✓
- Waste Minimisation ✓
- Resource Conservation ✓
- Public Transport ✓
- Addressing Climate Change ✓

THE FACTS

- Locally Owned enterprise is worth three times corporate \$\$\$
- Community Enterprise provides leadership and innovation in areas where the Public and Private Sector struggle
- Creating jobs is cheaper than unemployment

COMMUNITY ECONOMIC DEVELOPMENT

Te Tai Tokerau Model

Healthy Homes Tai Tokerau (Healthy Homes) is a joint venture between two Northland Community Enterprises – the Community Business and Environment Centre (CBEC) in Kaitiaki and He Iwi Kotahi Tatou Trust (He Iwi) in Moerewa. These two trusts have a 30 year history of turning Local Environmental and Social problems into positive local solutions.



National Relationships and Influences



cbec Social Enterprise

Expanding our local economy

- 25 years managing enterprise
 - One of the Far North's larger employers
- Spend 100% locally (5-6 million of annual turnover)
- Many successful Joint Ventures with Iwi, the Community and Private Sector

The facts

- Creating jobs is cheaper than unemployment
- Locally owned enterprise is worth three times corporate \$\$\$
 - Social Enterprise provides leadership and innovation in areas where the Public and Private Sector struggle

cbec ENTERPRISES WORKING TO GROW THE ECONOMY



What does energy hardship look like
No insulation, No lining and No effective heating

Pataua South Island (x 3 homes)



- 21 people living in 3 x whare (15 children, health concerns)
- No wall or ceiling lining, or insulation
- Whanau land occupied full-time forced due to unaffordable rental prices in town



Pataua South Island (x 3 homes) continued



- Completed insulation of 3 whare - ceiling, underfloor and walls
- Lining of all walls and ceilings
- Certified whanau builders
- Transformational impact for whanau



Our people providing Social Services
Tai Tokerau Health Providers



Progress Report

Warmer Kiwi Homes Y4

Dec 2021

Presented by
Hone Fowler

Date
December 1, 2021



Loved, Trusted and Staunch



The Facts

- Current economic and social structures do not match our needs now and will not into the future.
- Jobs are cheaper than unemployment.
- Social Enterprise is dynamic, creative and responsive to community need.
- Locally owned enterprises are worth three times corporate \$
- Improving our social and physical environment provides positive growth and social wellbeing.
- Community Enterprise can operate and provide leadership in areas where the public and private sector have always struggled.



ZERO WASTE NETWORK

2022

19 CONSTRUCTION & DEMOLITION PROJECTS

27 SORT & PROCESS RECYCLING

25 RECYCLING & WASTE COLLECTIONS

28 SCRAP METAL YARDS

32 REPAIR, UPCYCLING & REFURBISHMENT

38 OPERATING REUSE SHOPS

38 EWASTE RECYCLERS

20 OPERATING DROP-OFF SITES

25 ECO-PRODUCTS MANUFACTURE & OR SALE

74 NETWORK FULL MEMBERS



1400 EMPLOYEES



17,000 VOLUNTEERS



64,000 TONNES RESOURCES DIVERTED FROM LANDFILL



\$91 MILLION COLLECTIVE ANNUAL TURNOVER



436,000 EVENT & WORKSHOP PARTICIPANTS

66 WASTE EDUCATION & ENGAGEMENT

32 COMPOSTING & FOOD WASTE PROJECTS



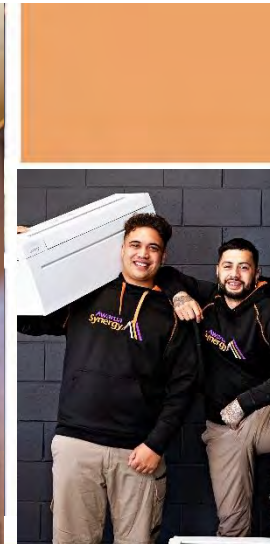


Māori Perspective

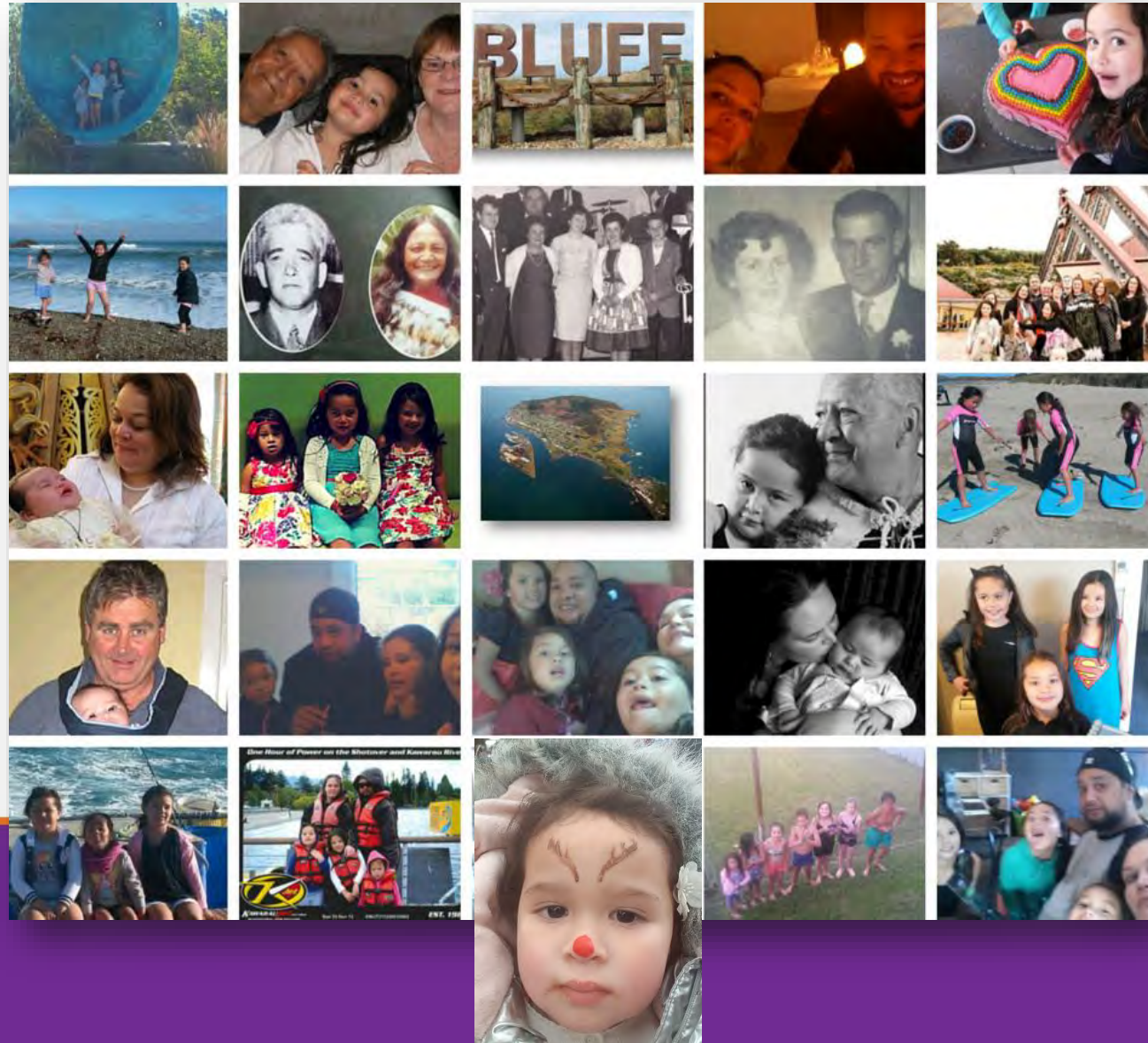
- **Sumaria Beaton - CEO, Awarua Synergy**
- **Anaru Marshall - Chief Executive, Ngāti Maru**
- **Alana Ruakere - Chief Executive, Tui Ora**
- **Leapagatele Matuamaivanu Helen Tua - Head of Payment Solutions, Mercury**

Energy Hardship 2023

Sumaria Beaton



Ko wai au?



Background Awarua Synergy



OUR VISION

Moemoea

Warming and eco-powering
our Deep South

*Kia mahana ake ai i a Murihiku
mā ngā mea tautaiāo*



About Te Rau Aroha Marae



Solar & Wind



Real Talk





Gaylene Leabourn

Healthy Homes Initiative National Lead, Te Whatu Ora



Dr Sea Rotmann

CEO, Sustainable Energy Advice (SEA)



Nina Campbell

Convenor of the Energy Wellbeing Evaluation Consortium



NO MORE THIRST,
NO MORE COLD,
NO MORE DARKNESS.

WATER AND
ELECTRICITY ARE
BASIC HUMAN RIGHTS

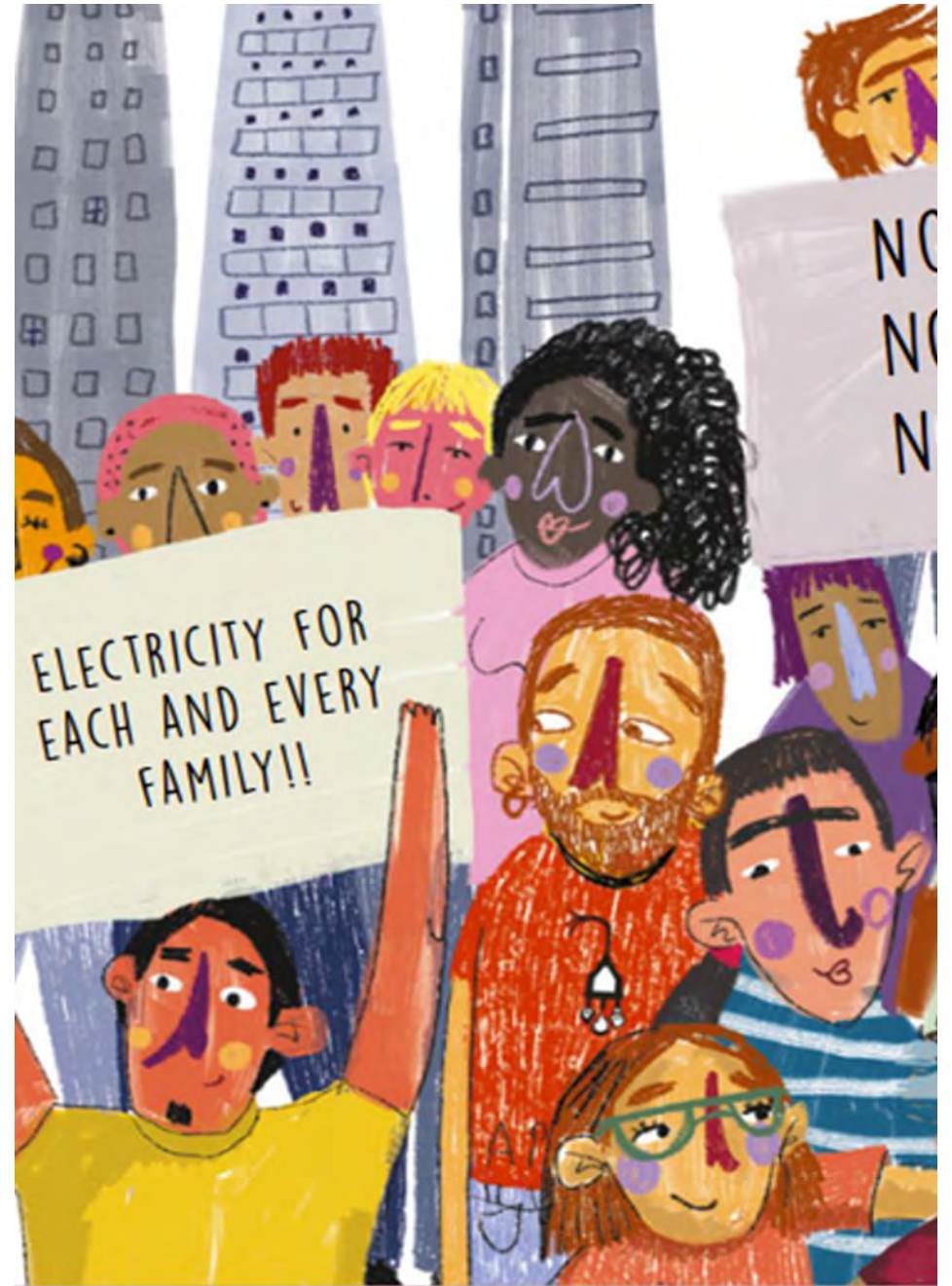
ELECTRICITY FOR
EACH AND EVERY
FAMILY

THE ENERGY WELLBEING EVALUATION CONSORTIUM

Nina Campbell
Convenor of the
Energy Wellbeing
Evaluation
Consortium

I WILL COVER:

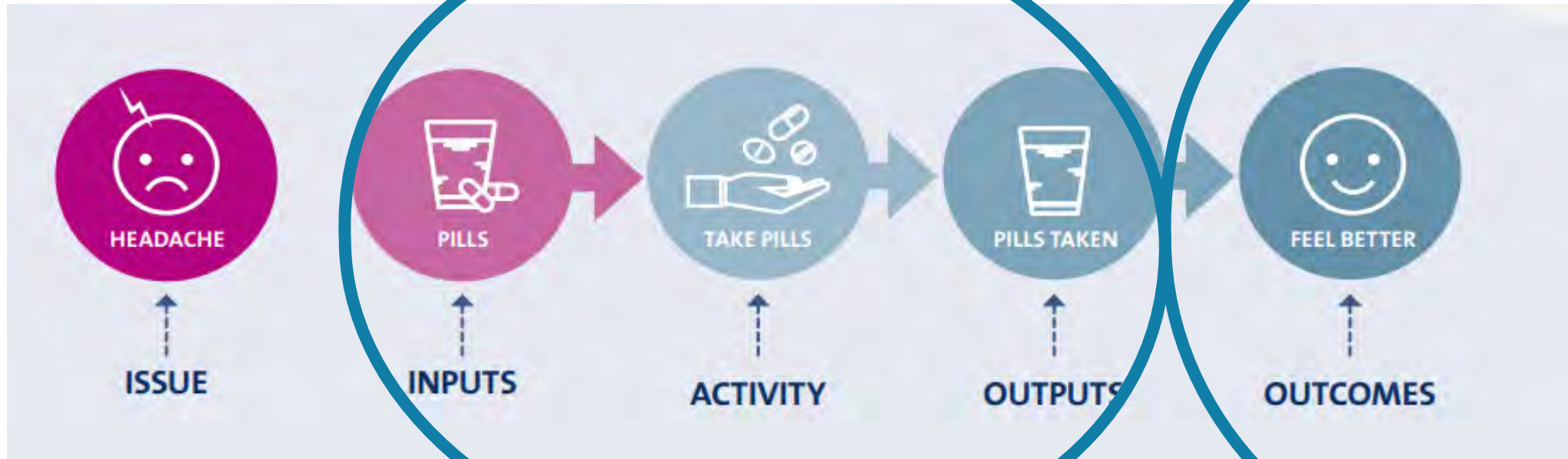
- ∞ What is evaluation?
- ∞ Why is evaluation so important to energy wellbeing?
- ∞ The joy of collaboration:
The Energy Wellbeing Evaluation Consortium
- ∞ Emerging Questions from the Consortium



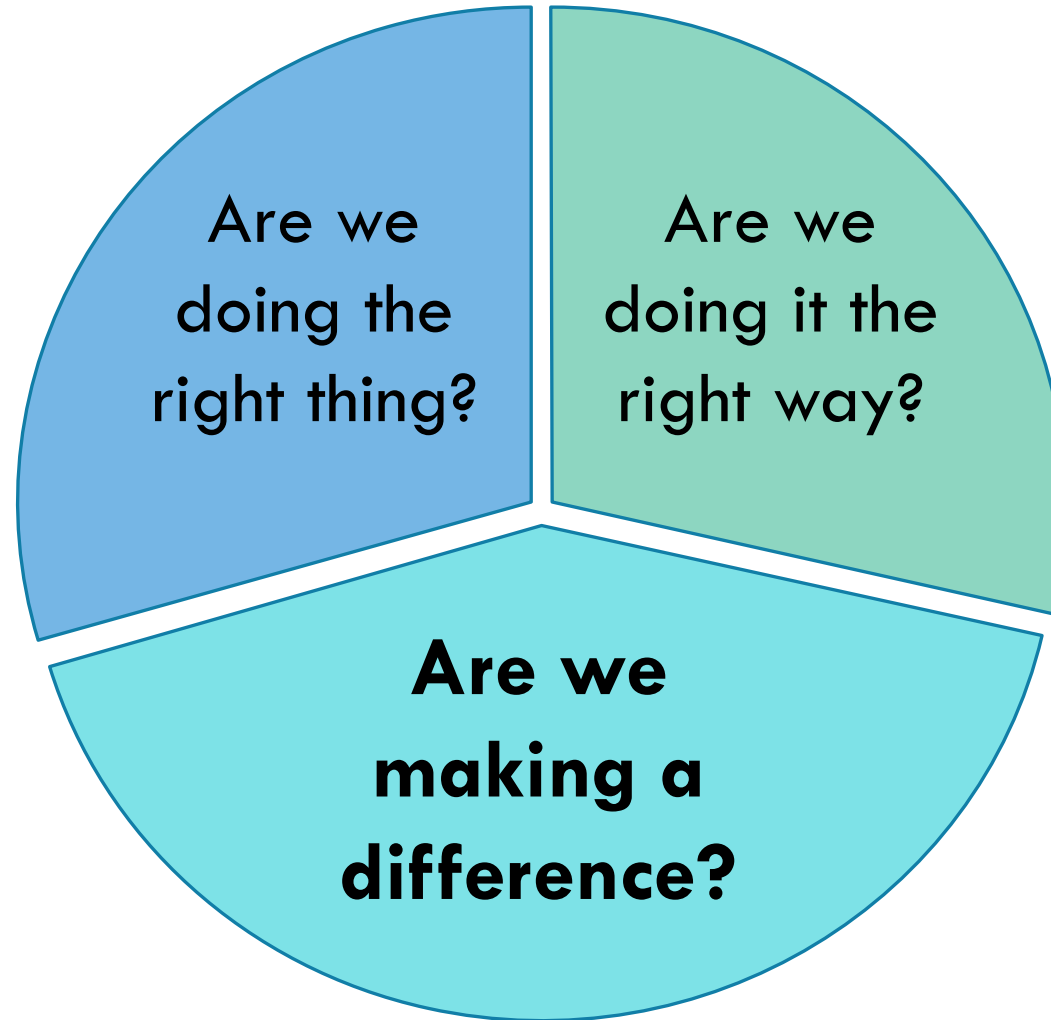
WHAT IS EVALUATION?

The focus of monitoring is here

The focus of evaluation is here



EVALUATION IS



A COMMITMENT TO DO BETTER

WHY IS EVALUATION SO IMPORTANT?

- ✓ Maximise your impact
- ✓ Support decision-making
- ✓ Tell a richer story
- ✓ Solutions should be based on evidence

Evidence-based policy NOT policy-based evidence

- ✓ Contribute to the wider evidence base



THE CONSORTIUM

To support continuous improvement of efforts to reduce energy hardship and promote energy wellbeing in Aotearoa

- ∞ Share, coordinate, replicate and improve
- ∞ Data, research evaluation tools, methods and experience
- ∞ Explore and develop new and innovative solutions to energy hardship
- ∞ Feed into policy processes



EVALUATIONS UNDERWAY

- ∞ EECA: Warmer Kiwi Homes
- ∞ CEN: monitoring project
- ∞ MOH: Healthy Homes Initiative
- ∞ BRANZ: HEEP2
- ∞ MBIE: Renewables for Public and Māori Housing Fund
- ∞ AUKAHA: Otago Home renovation project
- ∞ ERANZ: EnergyMate



OUR CURRENT FOCUS

- ∞ Sharing indicators
- ∞ Sharing frameworks
- ∞ Developing data and tools sharing platforms
- ∞ Supporting diverse voices



EMERGING QUESTIONS

- ∞ How do we promote pace and convey urgency?
- ∞ How can we link and leverage other groups in this space?
- ∞ How can we build a sustainable Secretariat?
- ∞ Funding will be needed to continue...





NO MORE THIRST,
NO MORE COLD,
NO MORE DARKNESS.

WATER AND
ELECTRICITY ARE
BASIC HUMAN RIGHTS

ELECTRICITY FOR
EACH AND EVERY
FAMILY!!

THANK YOU
NGĀ MIHI

Nina.Campbell.is@gmail.com

**Ara
Ake**

Future
Energy
Development



WISE
Charitable Trust

community
ENERGY
network

People powered wellbeing, together

NZ CHAMBERS OF COMMERCE

T A R A N A K I

Business Vitality

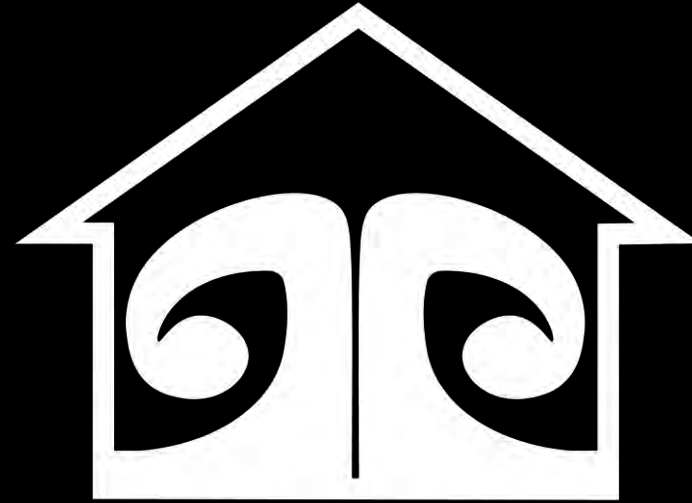
Nik Gregg

Co-Founder / Director, Sustainability Options



Sumaria Beaton

Chief Executive, Awarua Synergy

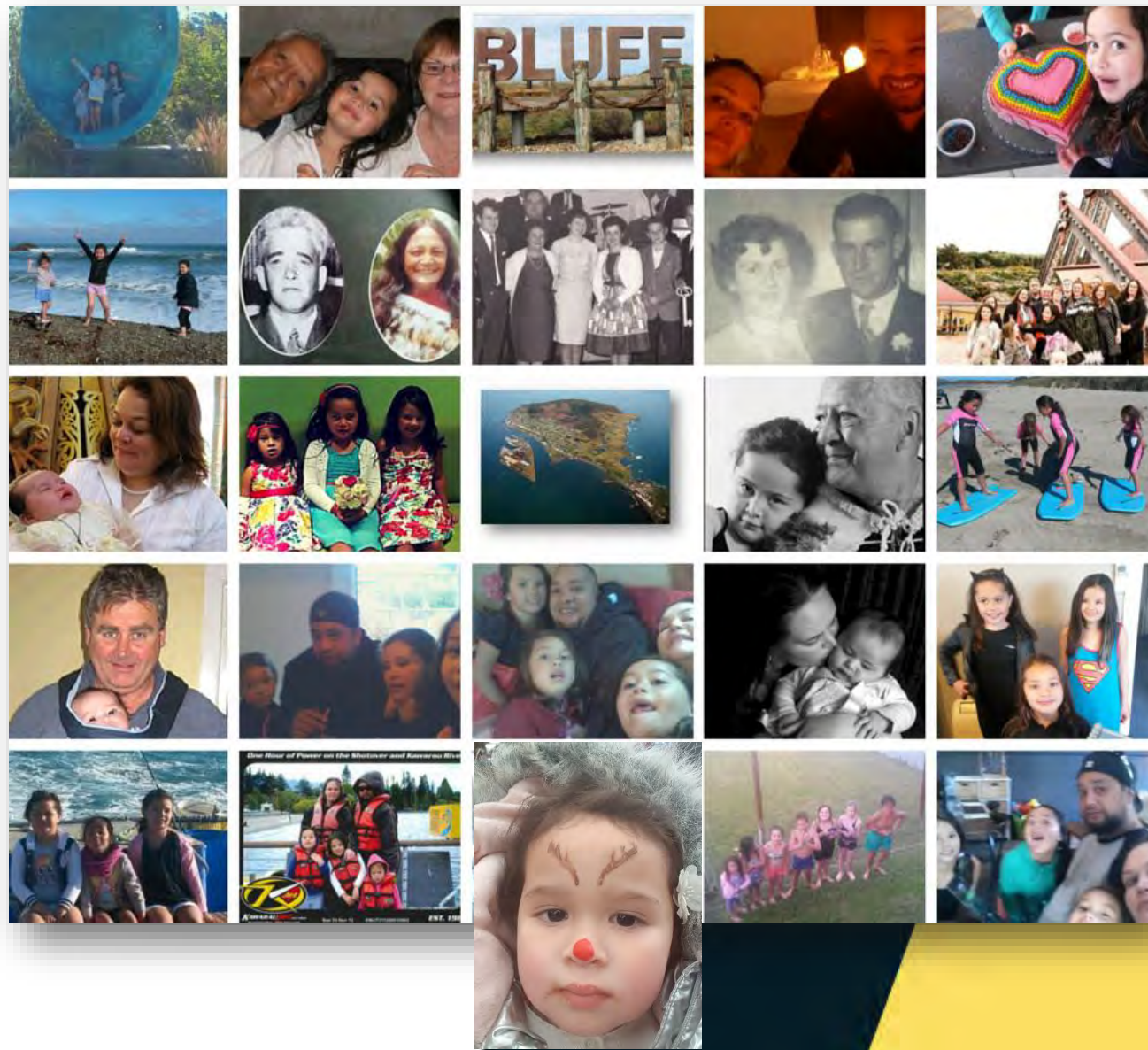


HAUORA HOMES

Energy Hardship May 2023, Sumaria Beaton



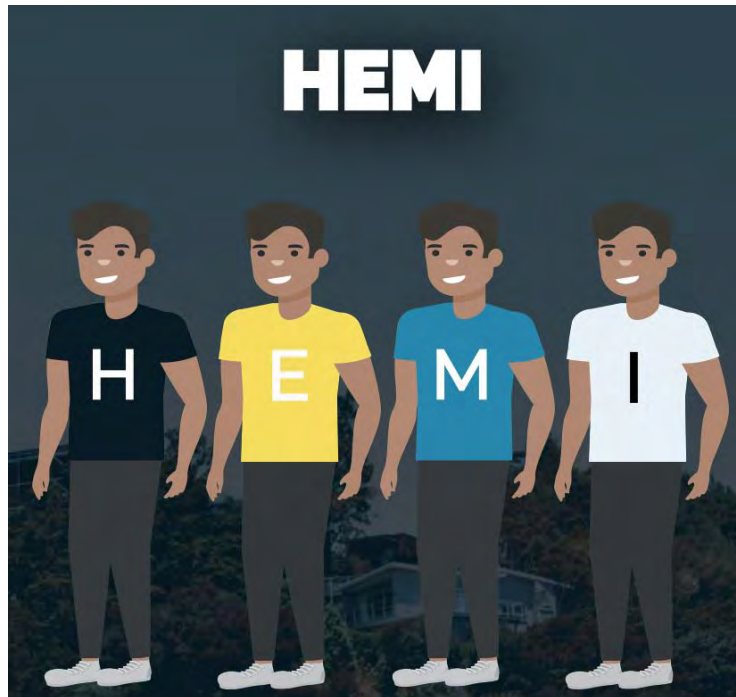
Intro



Awarua Synergy



Hauora Homes



Heating Electricity Moisture Insulation



Te Putahitanga – Whanau Ora

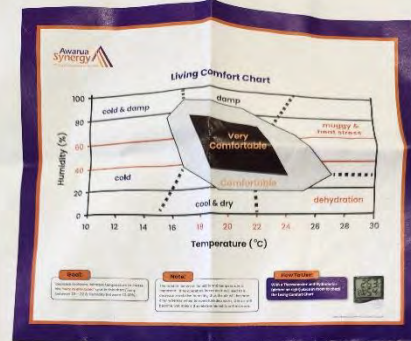


Mauri Hiko



Deliver Nation Wide

sumaria@awarua.org.nz

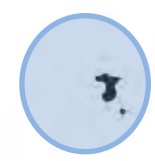


Name: _____

HEATING	ELECTRICITY
<input type="checkbox"/>	<input type="checkbox"/>
<input type="checkbox"/>	<input type="checkbox"/>
<input type="checkbox"/>	<input type="checkbox"/>
<input type="checkbox"/>	<input type="checkbox"/>
<input type="checkbox"/>	<input type="checkbox"/>
<input type="checkbox"/>	<input type="checkbox"/>

MOISTURE	INSULATION
<input type="checkbox"/>	<input type="checkbox"/>
<input type="checkbox"/>	<input type="checkbox"/>
<input type="checkbox"/>	<input type="checkbox"/>
<input type="checkbox"/>	<input type="checkbox"/>
<input type="checkbox"/>	<input type="checkbox"/>
<input type="checkbox"/>	<input type="checkbox"/>

Kitchen 12.7° 81% @ 10:44
 lounge 12.6° 82° @ 11:54am
 B12u #1 12.5° 83% 11-4:20am
 B12u #2 12.2am 13.3° 80%
 14.7° 72% 2:23pm # 3 B/room





Panel session: Energy Hardship Initiatives

- Alan Platt - Relationships Manager, Warmer Kiwi Homes, EECA
- Moana Andrew - Kaihautū, FinCap
- Maria Ramsay - Chief Executive, Toi Foundation
- Anaru Marshall - Chief Executive, Ngāti Maru
- Scott Willis - Project Manager, Aukaha



Leana Hunt

Operations Manager, Habitat for Humanity Northern Region



Habitat
for Humanity[®]
Northern Region

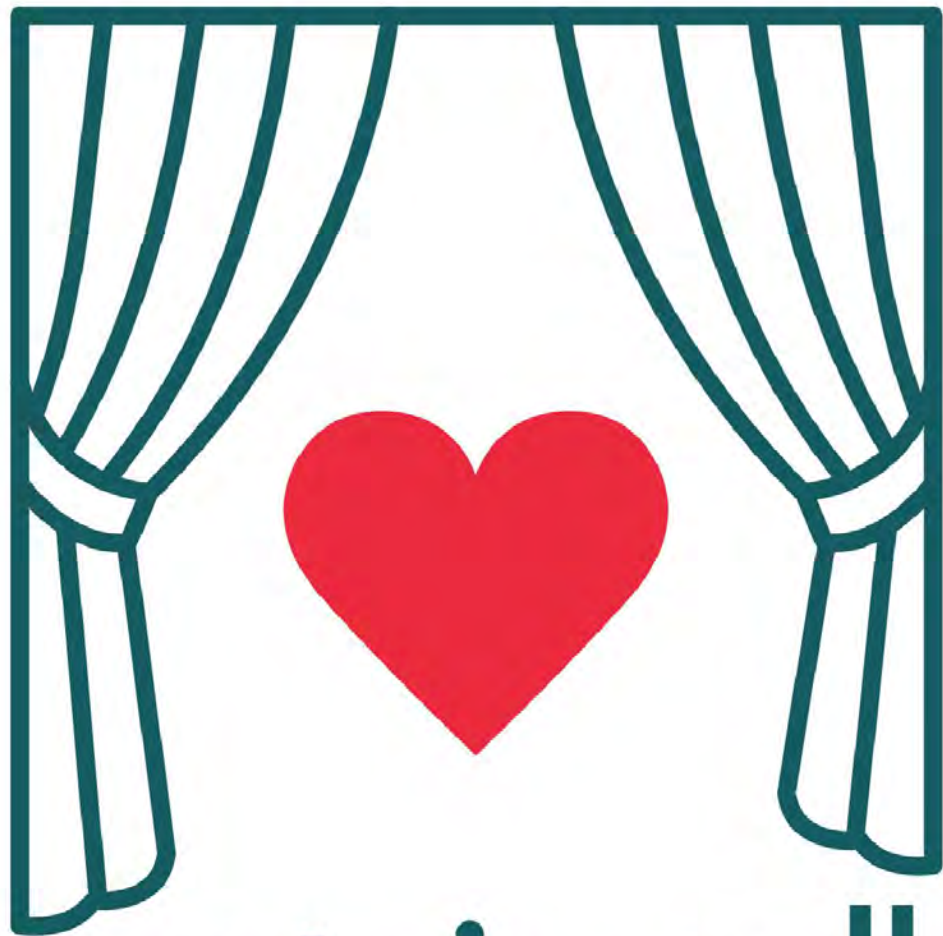
Curtain Call Launch

Curtain Call

Collaborators: Habitat for Humanity;
Community Energy Network;
Sustainability Trust; Beacon Pathway;
Starship Foundation

Mission: We are challenging the government to close the gap in the rental homes by making sure every home has effective curtains that hold warmth in.





curtain call

HEALTHY PEOPLE COME FROM HEALTHY HOMES

Programme Supporters

HOUSING



COMMUNITY AND HEALTH



ENERGY



SUSTAINABILITY



Sign our petition, share our petition

<https://our.actionstation.org.nz/petitions/close-the-gap-help-us-ensure-curtains-are-included-in-the-healthy-homes-standards>

Provide your logo support on our website

www.curtaincall.org.nz

**HEALTHY PEOPLE COME
FROM HEALTHY HOMES**

**HELP US CLOSE THE GAP
- SIGN THE PETITION**



Our homes need to look after us at every stage and circumstance of life because healthy people come from healthy homes. Together we can close the gap by making sure every home has effective curtains that hold warmth in.

We urge you to show support by signing the petition to make effective curtains mandatory in all rental homes.





**HEALTHY PEOPLE COME
FROM HEALTHY HOMES**

**HELP US CLOSE THE GAP
- SIGN THE PETITION**



Curtain Call's mission is to get effective curtains added to the Healthy Homes Standards. Together we can close the gap by making sure every home has effective curtains that hold warmth in.

We urge you to show support by signing the petition to make effective curtains mandatory in all rental homes.



**HEALTHY PEOPLE COME
FROM HEALTHY HOMES**

**HELP US CLOSE THE GAP
- SIGN THE PETITION**



Every year, tens of thousands of Kiwis are hospitalised with conditions made worse by cold, damp housing. When our homes have effective curtains we are warmer and healthier.

Sign the petition to close the gap and ensure effective curtains are included in the Healthy Homes Standards.



Contact me or Gareth for more information

Leana Hunt

Leana.hunt@habitat.org.nz

021 2575 444

Gareth Cartwright

gareth@communityenergy.org.nz

027 655 8812

www.curtaincall.org.nz

**Ara
Ake**

Future
Energy
Development



WISE
Charitable Trust

community
ENERGY
network

People powered wellbeing, together

NZ CHAMBERS OF COMMERCE

T A R A N A K I

Business Vitality

Jonathan Young

Head of Policy, Research & Insights, Ara Ake

Introduction to the Community Energy How to Guide

May 2023

**Kotahi te aho ka whati,
ki te kāpuia e kore e whati**

**One strand of flax is easy to break,
but many strands together will stand strong.**

Ara Ake Community Energy How to Guide

Identify leadership and stakeholders, and build community around the vision of sustainability, equity and resilience

Community energy project planning and building

Operations, maintenance and marketing

Kotahi te aho ka whati, ki te kāpuia e kore e whati

One strand of flax is easy to break, but many strands together will stand strong.

Three distinct work programs

This picture of interwoven flax shows the three main work programs in developing a community energy plan. they are:

- Leadership, Community & Vision building.
- Community Energy Project planning and building.
- Operations, Maintenance and selling your electricity (Marketing).

Ten steps under these work programs

Aligned with these three distinct work programs are ten steps (1-10). These are depicted to show that although they are sequential, they may also overlap each other at times. In fact, some steps, like "Tell your story" starts early on and can continue beyond your project, inspiring other groups in their journey to develop their own community energy project.

1 Identify leadership and stakeholders, your iwi, and the value of sustainability, equity and resilience

2 Develop your overarching vision and define success for your project

3 Build community engagement, celebrate milestones and tell your story

4 Define your governance structure and roles

5 Understand the electricity ecosystem

6 Plan an outline of your community energy project

7 Finance and contract options

8 Connecting to the grid

9 Develop your long-term operational plan

10 Selling your electricity

Co-ordinating the many steps of a Community Energy Project (CEP) is a complex task, starting with a group of people who are passionate to pursue the value of self-generation, zero emissions, and energy independence; right through to constructing infrastructure, connecting to services and exporting electricity to the grid. This diagram seeks to help you understand this journey.

Identify your stakeholders, your iwi and the value of sustainability, equity and resiliency

May 2023



Develop your overarching vision and define success for your project

May 2023



Build community engagement, celebrate milestones and tell your story

May 2023



Defining governance structures and roles

May 2023



Understanding the electricity ecosystem in Aotearoa New Zealand

May 2023



**Ara
Ake**
Future
Energy
Development

Plan an outline of your community energy project

May 2023



**Ara
Ake**
Future
Energy
Development

Finance and contracts options

May 2023



Connecting to the Grid

May 2023



Develop your long-term operational plan

May 2023



Selling your electricity

May 2023



Next Steps for the Ara Ake Community Energy How to Guide?

1. The guide is available from today on www.araake.co.nz
2. The guide is designed to be a platform and it is not prescriptive how you should use it.
3. We invite feedback on what is helpful and what is not.
4. We invite feedback on what improvements could be made.
5. Would templates help you with planning? What would they look like?
6. Would it be helpful to have a “navigator” – that is, someone who is experienced in community energy, to take you through the guide and offer advice and support in your project?
7. This is a “living document” and Ara Ake is planning an annual review – do you want to be part of that?

**Kotahi te aho ka whati,
ki te kāpuia e kore e whati**

**One strand of flax is easy to break,
but many strands together will stand strong.**

**Ara
Ake**

Future
Energy
Development



WISE
Charitable Trust

community
ENERGY
network

People powered wellbeing, together

NZ CHAMBERS OF COMMERCE

T A R A N A K I

Business Vitality

Reducing Energy Hardship Conference

24 & 25 May 2023 | Devon Hotel, New Plymouth



MINISTRY OF BUSINESS,
INNOVATION & EMPLOYMENT
HĪKINA WHAKATUTUKI



MINISTRY OF SOCIAL
DEVELOPMENT
TE MANATŪ WHAKAHIATO ORA